

ULTIMATE THREAT MANAGEMENT



Ultimate Threat Management

The Netbox Blue Ultimate Threat Management (UTM) solution provides organizations with the only unified solution to manage and secure all internet traffic, in and out of their network.



ULTIMATE THREAT MANAGEMENT

Ultimate Threat Management

Never before has the reliability of the network been so crucial to an organization. Yet, the mounting avalanche of threats and the proliferation of social media are dramatically increasing the challenges for IT managers and administrators.

Organizations need advanced security protection for their network and data. They also need control over how staff use the internet – both inside and outside the network.

With the ubiquity of smartphones, mobile workforces, social media and Web 2.0, the risks and challenges have escalated. Netbox Blue delivers the most advanced solution to manage this new era of internet enablement and social collaboration.

Netbox Blue's award winning Ultimate Threat Management (UTM) solution is the only all-in-one technology available that offers a single device to manage all of these complex challenges.



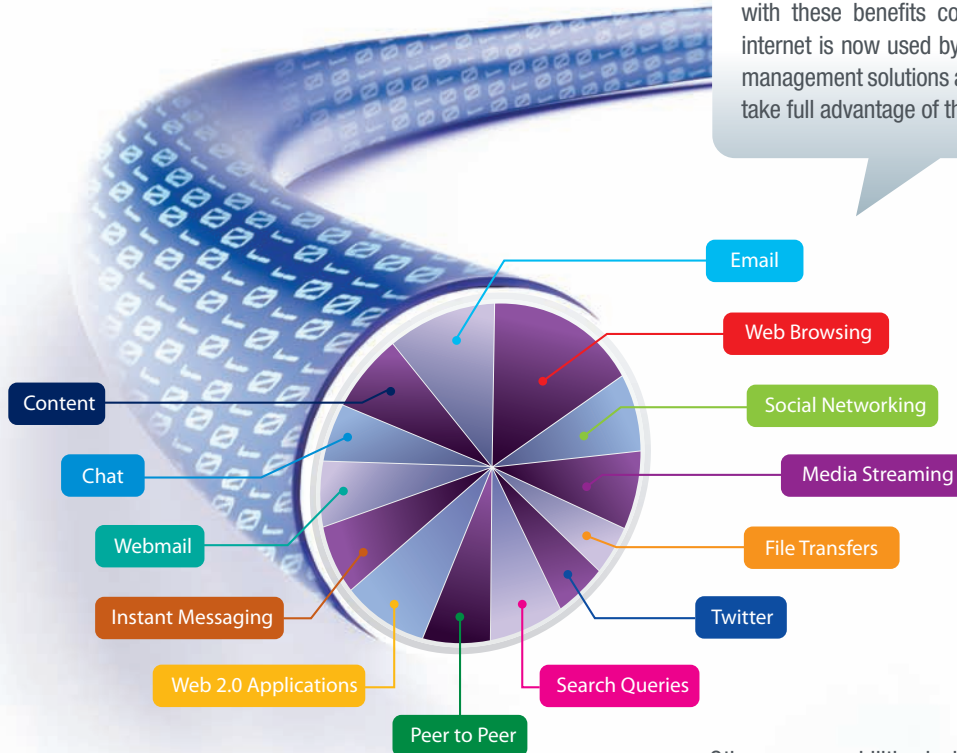


Netbox Blue's UTM offers many core features, including the following:

- **Enterprise-class managed firewall** provides protection against all external threats, including Denial of Service attacks, Brute Force attacks and malware.
- **Protocol neutral Anti-Virus scanning** ensures that all traffic across all ports and protocols is inspected, preventing any viruses from impacting the network. This advanced capability includes scanning of secure, encrypted web traffic over HTTPS or SSL connections.
- **Next generation spam filtering** prevents most spam from even being downloaded – saving valuable bandwidth and mail server performance degradation. Advanced gateway spam filtering filters out all remaining spam, leading to near zero false positives and zero administration overhead.

- **Content compliance engines** provide the ability to manage all forms of content received, sent or accessed over the internet by any user. This technology can be further enhanced with Netbox Blue's premium features – Category Web Filtering, SafeChat® and the Borderless Internet Compliance framework.
- **Email and attachment content controls** extend the capabilities to allow scanning of all email and common attachments for inappropriate or confidential data leakage.
- **Internet quota and traffic management** provides total flexibility to an administrator to prioritize bandwidth-hungry or critical applications and to manage, charge and account for internet usage via user and group data quotas.
- **Real-time and historical reporting** with automatic alerting for policy breaches and drill-down graphical reporting for ease of management.

The internet offers huge advantages to organizations but along with these benefits come the risks from the many ways the internet is now used by staff. Netbox Blue's unique total internet management solutions address these risks and help organizations take full advantage of the opportunities the internet presents.

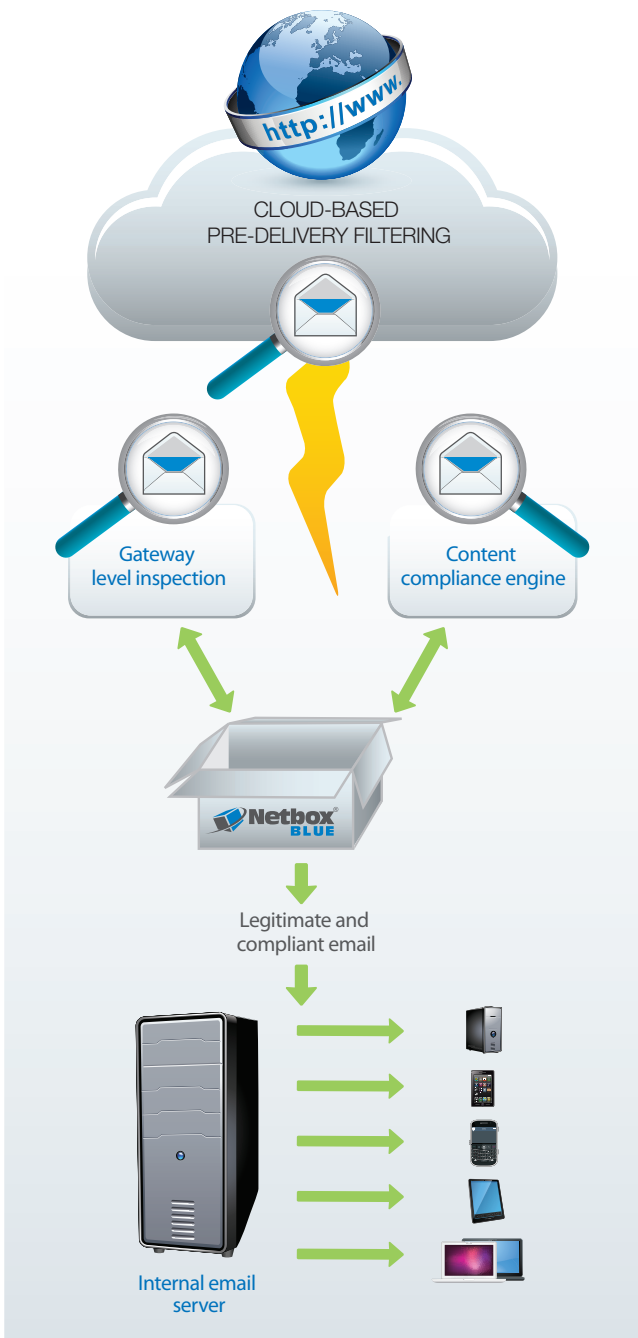


Other core capabilities include secure VPN capabilities, an integrated web proxy and an easy-to-use GUI with secure web-based access. The solution is fully managed and is seamlessly updated using Netbox Blue's Push Technology framework. This ensures all security features and virus updates are continually updated in real-time with no administrator intervention required.

ULTIMATE THREAT MANAGEMENT

Advanced email filtering

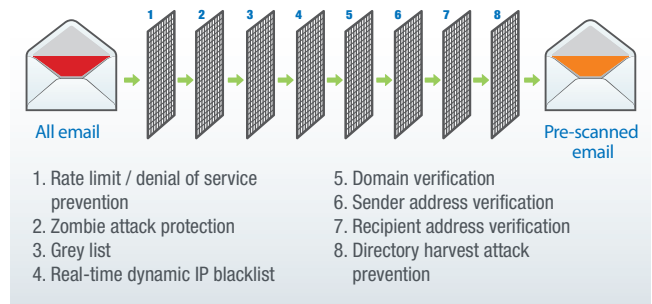
Netbox Blue's advanced email filtering capabilities deliver real business benefits – dramatically reduced administration, near zero false positives and the most advanced spam filtering and content compliance capabilities in the world. The multi-level filtering is summarised below.



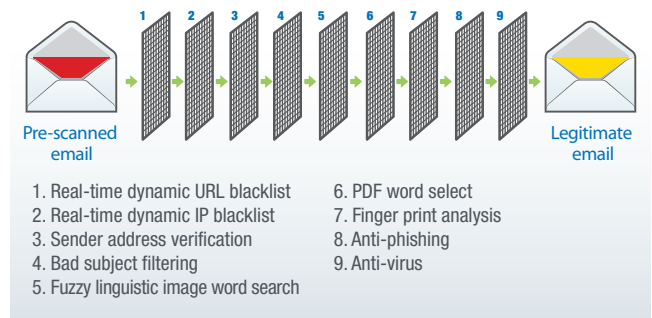
Multi-level and layered inspection, filtering and compliance management

The three levels of filtering provide the finest level of accuracy and control over all email traffic. The three separate filtering and compliance engines ensure the greatest degree of predictability and accuracy across all email traffic.

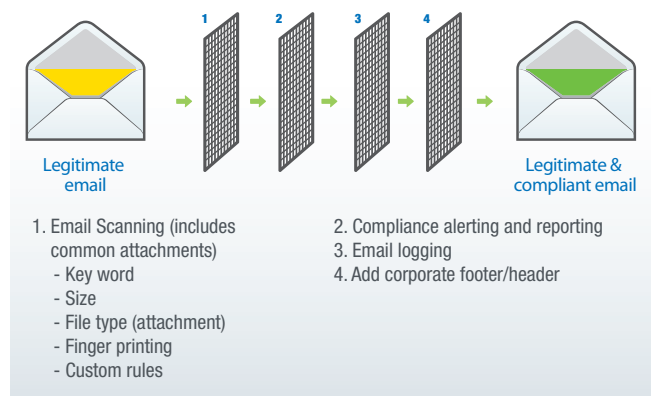
1. Cloud-based pre-delivery filtering



2. Gateway level inspection and filtering (including POP3 email scanning)



3. Content compliance engine





The UTM also offers the ability to integrate into the same solution a range of unique and valuable premium feature options:

- **SafeChat®** provides real-time social media and Web 2.0 communication management and moderation. SafeChat® seamlessly scans all internet traffic to identify the most common social media and Web 2.0 applications use including Facebook, Twitter, Gmail, Windows Live Messenger, MSN, Google Talk and popular search engines. It can then block this from being sent or seen. SafeChat® can be used to help prevent issues such as reputational damage and data leakage across social media, as well as to alert management of any inappropriate communications – for example profanity.
- **The Borderless Internet Compliance (BIC) Framework** enables a company to implement its acceptable use policies for all internet and social media use on any device using the company's internet services and on any Windows or Mac OS device* outside the network, irrespective of internet access service.
- **NetGuard IPS** offers advanced protection against network intrusions and botnet attacks and also offers an advanced Web 2.0 Application Management framework. This gives administrators the ability to detect and block traffic by individual application, covering P2P, Instant Messaging, Gaming, etc. This capability has flexible policy setting and integrated reporting and alerting capabilities.
- **PipePlus®** offers internet link aggregation, load balancing and automatic failover and failback. It covers all internet links, including ADSL, 3G and even satellite.

- **Microsoft Exchange Plug-in** enables a company to route all internal email through the Netbox UTM to scan for content compliance and viruses.
- **Category Web Filtering** utilises the latest in hybrid cloud-based and local technology to deliver the ability to flexibly and instantly manage web access by category of website with real-time updates of new websites and existing sites, down to a page level. This feature includes **Netbox Blue's Zero Day Anonymous Proxy Protection (ZDAPP)** where anonymous proxies are automatically identified and blocked, preventing users from circumventing the web-filtering policies. The solution also includes Netbox Blue's real-time URL malware detection service with full zero-hour threat prevention. All sites are frequently re-categorized and the service is language and location independent. New sites are auto-categorized in real-time with any sites that cannot easily be auto-categorized processed within hours by a global team of multi-lingual web analysts.

Using Netbox Blue's advanced technology gives an organization total control over all internet use while also benefitting from complete perimeter security and malware prevention. Netbox Blue's range of advanced premium features offer unrivalled flexibility and controls, enabling a company to make one investment in a technology solution that not only delivers security and content compliance but also provides unrivalled abilities to manage Web 2.0 applications, social media and even laptops and MacBooks™ outside the network.

*Windows refers to Windows Vista, XP and 7, and Mac OS refers to v 10.6.5 and later.

ULTIMATE THREAT MANAGEMENT

Detailed reporting and alerting with drill-down capabilities

Detailed reporting provides real-time or historical reporting on internet and network use for all users. These reports can be accessed via a web browser, by logging into the Netbox interface or can be automatically emailed to pre-defined contacts. Real time alerts can

also be set up to inform key contacts or administrators if any rules or policies have been breached.

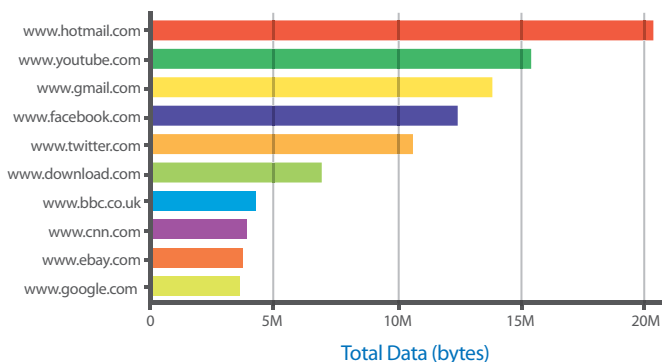
An example of the simplicity of the drill down capability and graphical reporting is shown below:

<< first < prev (page 1) next > Save Page Save All Add to Report 				
Local Computer		Data In	Data Out	Total Data
johnsonh	237M	57M	294M	
mgratha	36.3M	7.76M	44M	
jenningsl	32.4M	3.92M	36.3M	
andrewse	32M	2.53M	34.5M	
wrights	31.4M	2.43M	33.8M	
burnsw	30.4M	3.13M	33.5M	
ryant	32.1M	1.14M	33.3M	
dixonm	28.7M	3.38M	32.1M	
davidsonp	29.2M	2.36M	31.5M	
smithb	29.4M	1.97M	31.4M	

This shows total data usage by user over a specific time period

<< first < prev (page 1) next > Save Page Save All Add to Report 						
Remote Computer	First Recorded	Last Recorded	Data In	Data Out	Total Data	
www.hotmail.com	2011-01-13 10:01	2011-01-13 10:44	2.5M	1.74M	29.3M	
www.youtube.com	2011-01-13 11:17	2011-01-13 11:49	14.0M	54M	15.4M	
www.gmail.com	2011-01-13 08:09	2011-01-13 17:07	13.6M	14M	13.8M	
www.facebook.com	2011-01-13 08:07	2011-01-13 17:06	11.5M	15M	12.4M	
www.twitter.com	2011-01-13 08:06	2011-01-13 17:06	10.4M	15M	10.5M	
www.download.com	2011-01-13 11:11	2011-01-13 14:24	6.38M	50M	6.09M	
www.bbc.co.uk	2011-01-13 17:07	2011-01-13 12:20	3.64M	59M	4.24M	
www.cnn.com	2011-01-13 17:01	2011-01-13 12:09	3.0M	63M	3.07M	
www.ebay.com	2011-01-13 12:09	2011-01-13 12:50	3.6M	20M	3.7M	
www.google.com	2011-01-13 09:30	2011-01-13 15:13	2.73M	91M	3.65M	

This report shows the detailed activity of a single user



This detail shows another way of looking at a user's activity over a specified time.

This can be further analyzed by clicking through to find the type of traffic and time of use.



Summary of key benefits:

- Advanced firewall security and network attack protection
- Malware protection
- Anti-virus and anti-spam with real-time updates ensuring total protection
- Content compliance management, including data leakage and profanity scanning, where required, across all common communications, including email and attachments
- Social media management and moderation in line with organizational policies
- Borderless Internet Compliance (BIC) across laptops and MacBooks™ used outside the network
- Advanced web filtering controls with real-time updates and page level categorization capabilities
- Web 2.0 application detection, alerting and controls
- Advanced historical and real-time reporting, with easy to view graphs and drill down capabilities
- Internet link optimization with the ability to load balance and failover across up to 16 separate internet links (including 3G)

Deployment flexibility:

Netbox Blue UTM solutions are available in a range of flexible deployment options. For smaller businesses (up to 30 users) Netbox Blue offers its mini Netbox appliance. This is a custom-designed, office environment system with no requirements for computer room technology (rack space, air conditioning, etc.).

For businesses with more than 30 users, or with the requirement for superior support or resilience, Netbox Blue provides its i-Series hardware appliance. This is a highly scalable custom-built IBM system that includes hardware RAID and disk drives that are easy to swap out hot-swap drives on the higher-end systems. Redundant power and fans are standard on higher-end systems and are a configurable option on smaller systems. These capabilities deliver high levels of resilience for the hardware platform. On-site support is also provided by IBM.

The Netbox was the world's first virtual internet security appliance available on VMware. Now it is also supported on Hyper-V for up to 30 users.

The UTM integrates with group directory services including Microsoft Active Directory, Apple Open Directory and Novell eDirectory. Networks of any size can be accommodated with the scalable framework and appliances can be implemented as a gateway device or with reduced internet management capabilities as an in-line, transparent solution to manage specific vulnerabilities within the network or on laptops outside the network, utilising the BIC framework.

Ease of use

The Netbox Blue user interface is web-based and can be accessed from any browser or internet-enabled device such as an iPhone or iPad. The GUI is highly intuitive and is very simple to navigate with full on-line help available.

Support

IBM provides on-site support for its custom-built IBM systems and this service can be tailored to suit an organization's individual requirements.

Netbox Blue offers support through its network of distributors and resellers.

Netbox Blue offers the following unique Services capabilities:

- Firmware updates approximately every 6-8 weeks
- Dynamic back-up and restore engine for all policies and settings
- Anti-virus, anti-spam and other security updates (automatically updated using the seamless Netbox Push Update Technology framework)
- Access to real-time, cloud-based spam databases
- Updates to Category Web Filtering, SafeChat®, PipePlus and Netguard IPS (if purchased)
- Standard feature enhancements (non-premium modules)



Advanced
Business
Partner



Beacon Award
Winner 2011

The 2010
IAWARDS



Consensus
Software
Awards 2010



TESTED
www.testedlab.com



Why Netbox Blue?

Netbox Blue is a leading provider of innovative internet compliance, management and security solutions. Netbox Blue provides organizations with unique, real-time social media analysis and controls with predictive outcomes and benefits. The company owns granted patents around this unique technology and has other patents in the process of being granted. The company was established in 1999, is privately held and is based in Australia. It has a presence in over 19 countries and has partnerships and distribution agreements with some of the world's largest IT companies.

Head Office

37 Kennigo St, Spring Hill, QLD 4000, Australia
Phone: 1300 737 060 | **Fax:** 1300 737 069

Postal Address

PO Box 396, Fortitude Valley, QLD 4006, Australia

International Phone: +61 2 8090 7779

www.netboxblue.com